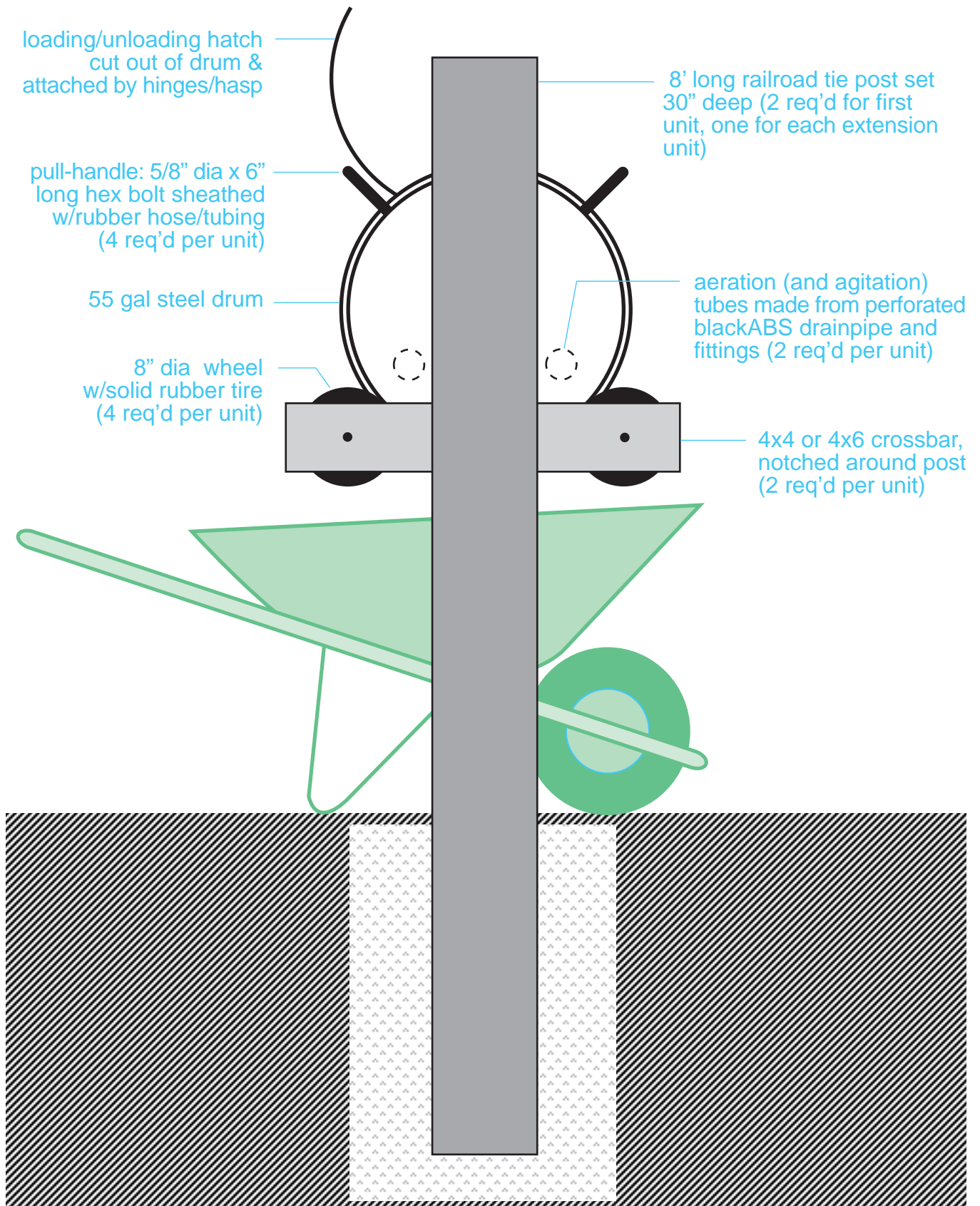


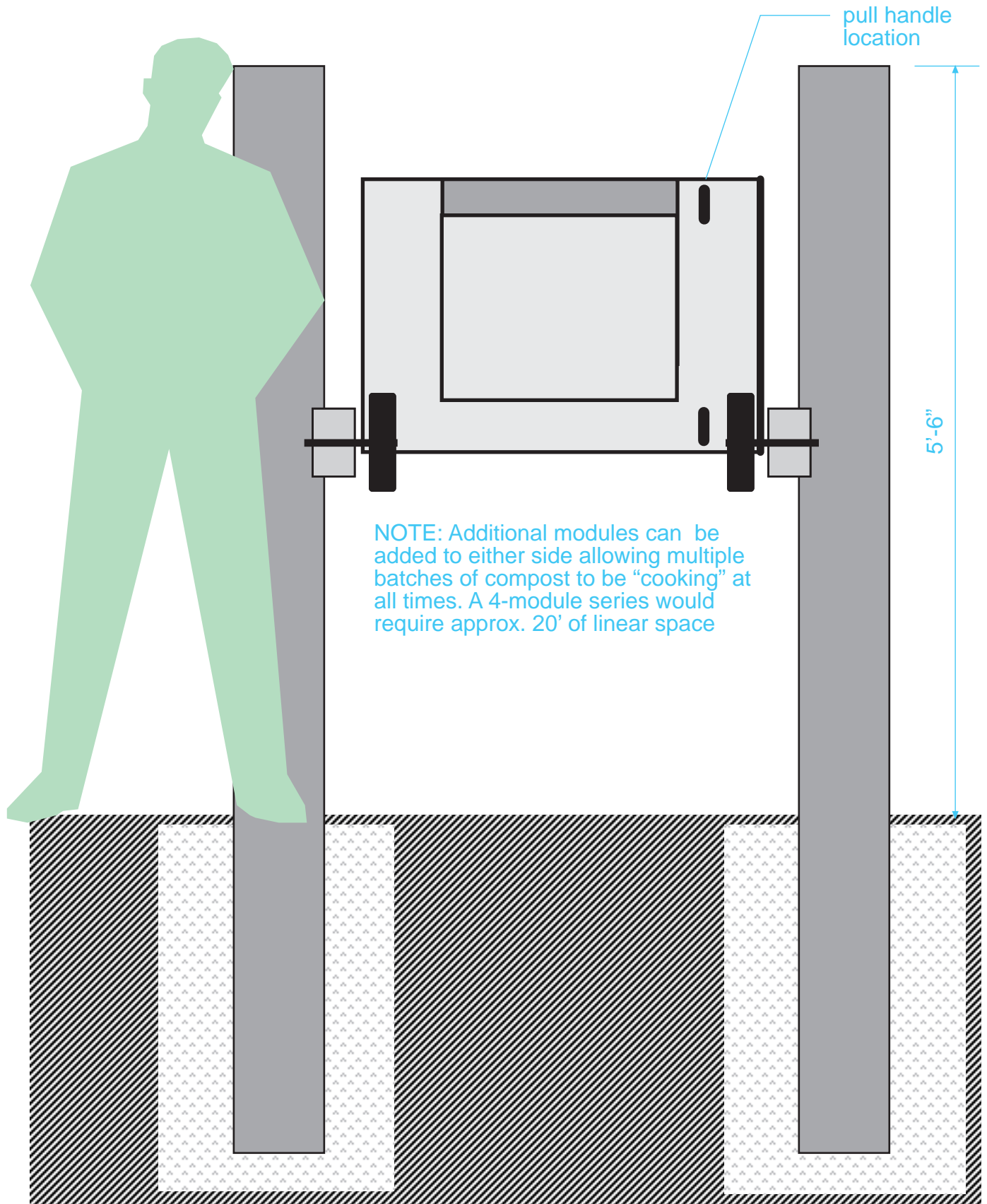
Windward ComPost Tumbler Module: End view

scale: 1" = 1'



Windward ComPost Tumbler Module: Front view

scale: 1" = 1'



Windward ComPost Tumbler Module: Materials list (prototype)

PART NAME	QTY	DESCRIPTION
Post	2	Railroad tie, 8' long, good condition
Drum	1	55 gallon closed end steel drum
Crossbar	2	4" x "4 or 4" x 6", approx 3' long
Crossbar fasteners	4	1/2" dia x 8" long hex lag bolts
Axle assembly	4	7/16" dia x 6" long hex bolt, washers and nuts
Pull-handle	4	5/8" dia x 6" long hex bolt along with nuts and washers
Pull-handle cover	4	length of rubber tubing or hose to fit snugly over bolt
Hinge assembly	2	galvanized metal hinge and mounting hardware
Closure assembly	1-2	hasps and mounting hardware
Aeration tube	2	4" dia x 36" long perforated black ABS drainpipe and fittings
Black enamel		